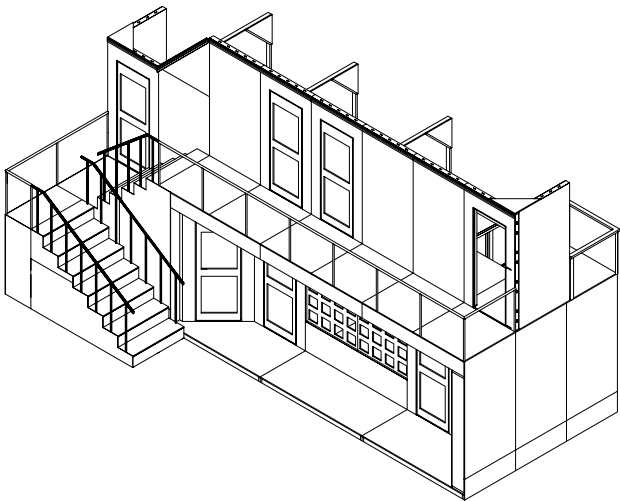


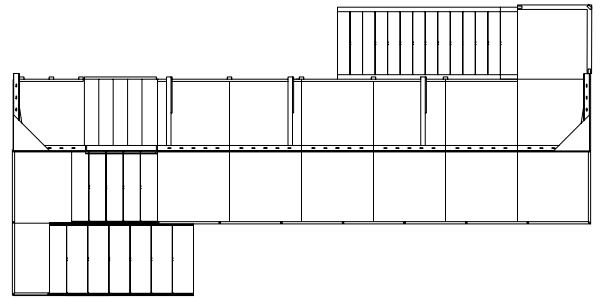
1 Right Iso



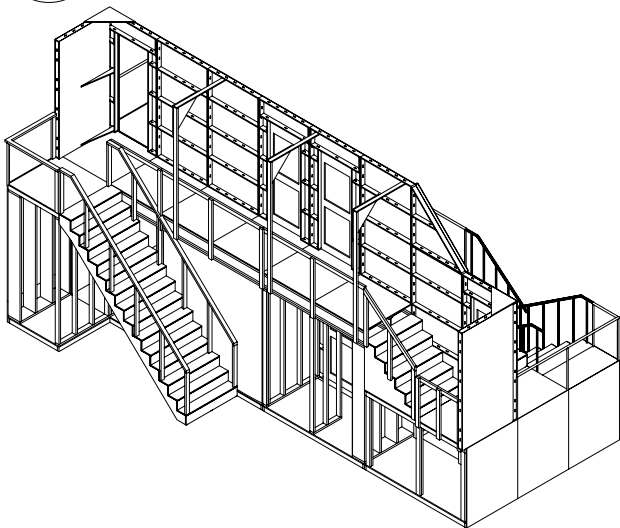
2 Left Iso



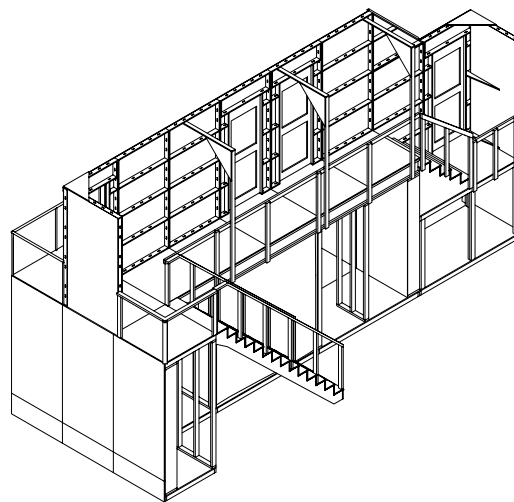
5 Top



3 Left Rear Iso

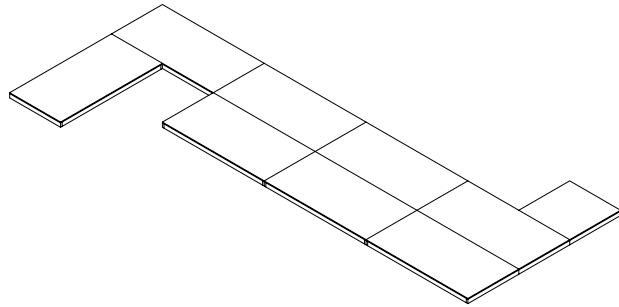


4 Right Rear Iso

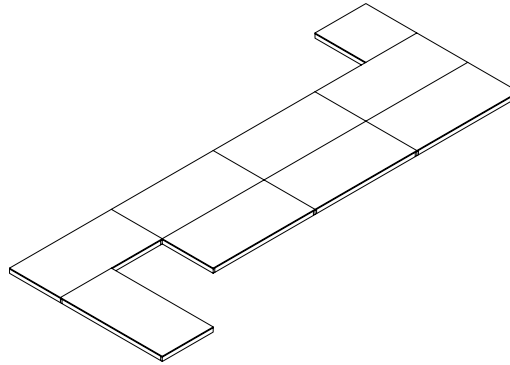


Show Name Noises Off 2019		
Reference 3/32"=1'	Drawn By Scott Bedell	Date 09/05/19
CAD File Name Overview	Noises Off 2019 14.wvx 2	

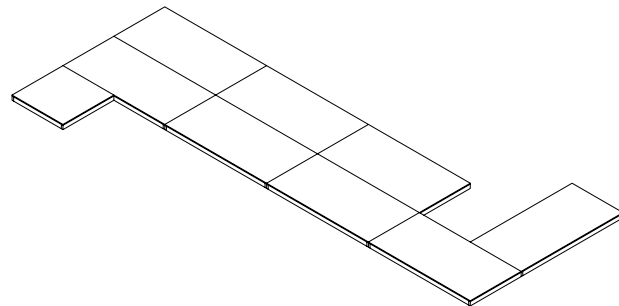
1 Right Iso



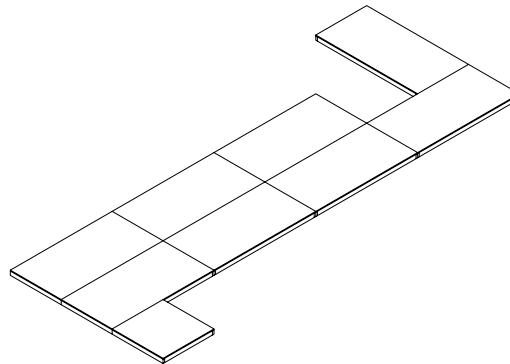
2 Left Iso



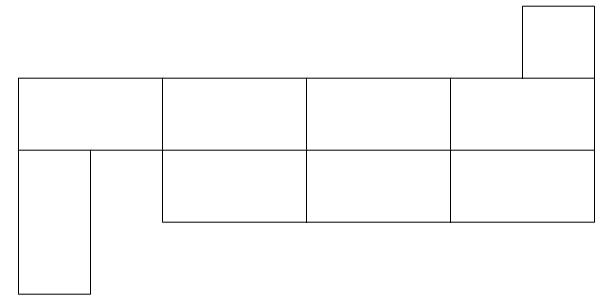
3 Left Rear Iso



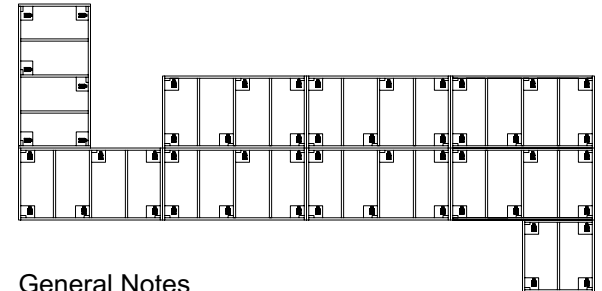
4 Right Rear Iso



5 Top



6 Bottom



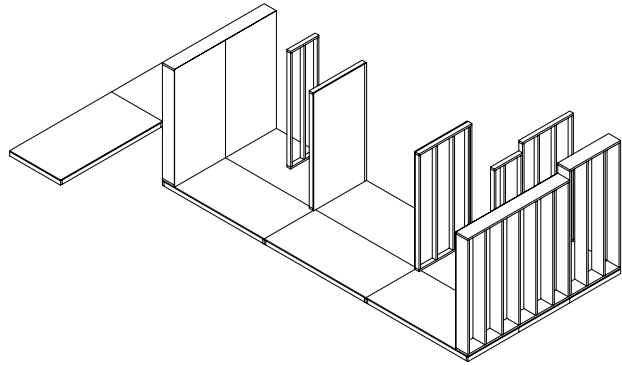
General Notes

Instructions. -Bolt all platforms as shown in the bottom view EXCEPT the 4x4 in the bottom right corner.
 -Predrill holes for bottom 4x4 if not done.

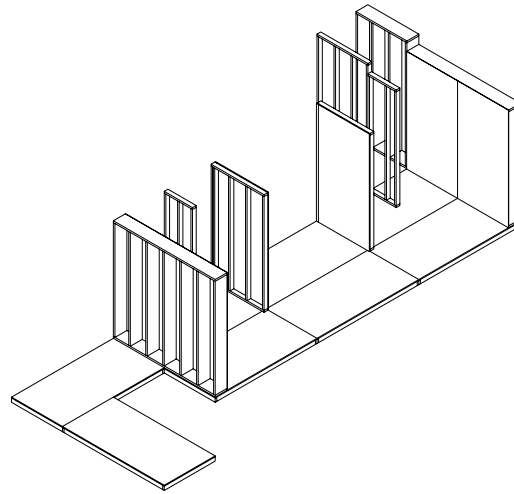
-Flip entire setup on flush side
 -Bolt 4x4 platform.
 Bolt Note. -Bolt should be 4" long with washer, lock washer and nylock nut.
 -Bolts should be tight prior to flipping.
 -Casters and caster lag screws should be firmly affixed.

Show Name Noises Off 2019		
Reference 3/32"=1'	Drawn By Scott Bedell	Date 09/05/19
CAD File Name Overview	Noises Off 2019 14.vwx 3	

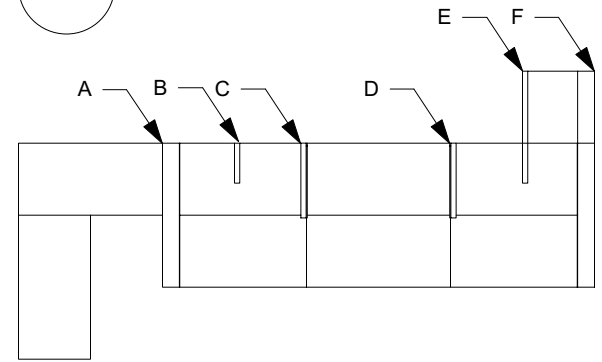
1 Right Iso



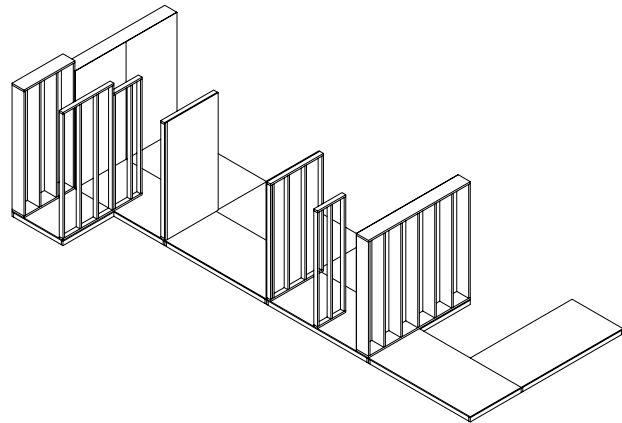
2 Left Iso



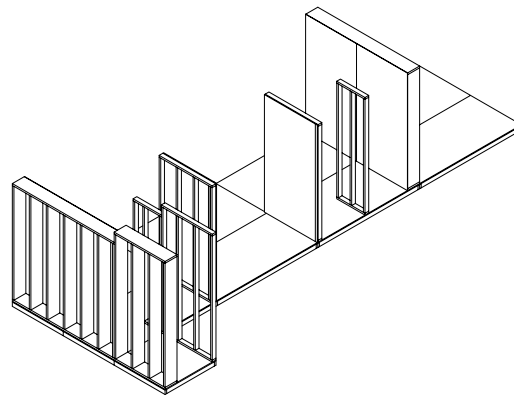
5 Top



3 Left Rear Iso



4 Right Rear Iso

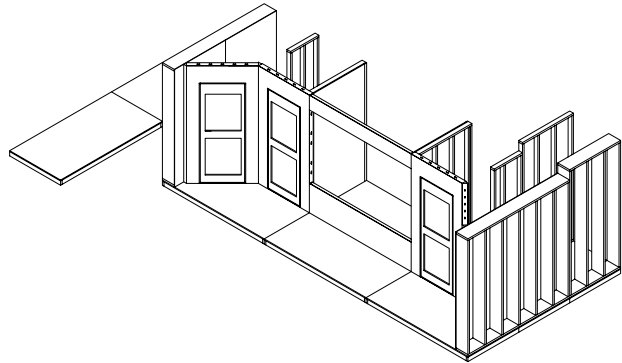


General Notes

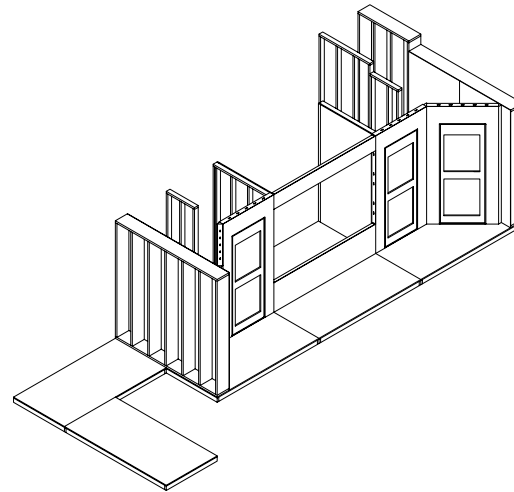
- Instructions.
- Screw down support walls with 3" screws to 2x4 structure of platforms.
 - Stud walls are A-F as marked in 5-Top.

Show Name Noises Off 2019		
Reference 3/32"=1'	Drawn By Scott Bedell	Date 09/05/19
CAD File Name Overview	Noises Off 2019 14.wvx 4	

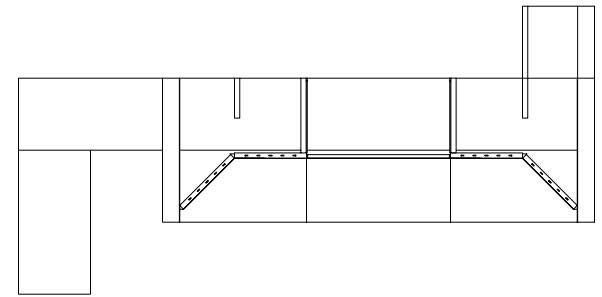
1 Right Iso



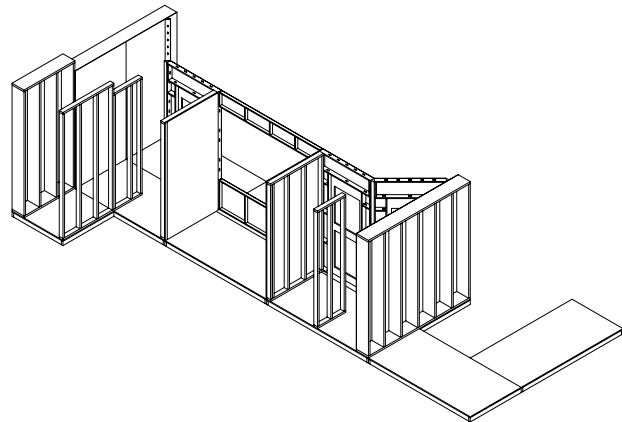
2 Left Iso



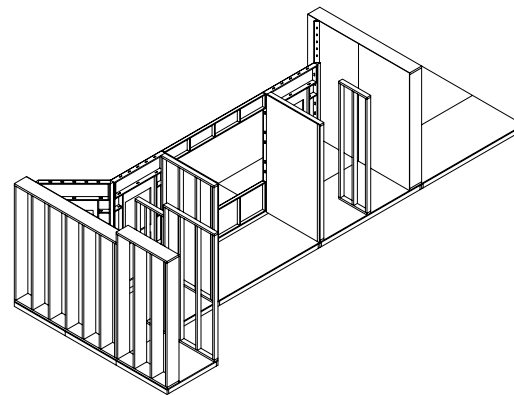
5 Top



3 Left Rear Iso



4 Right Rear Iso



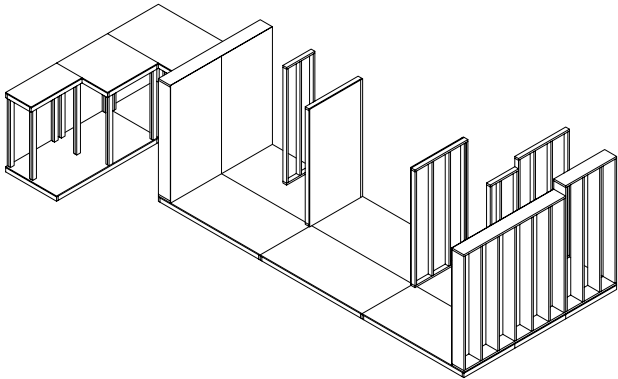
General Notes

Instructions. -Add fist floor/wagon level flats:
 (4) Doors with Special Pieces
 (1) 8'x1' Flat
 (1) 8'x2' Flat
 (2) 4'x5' Windows (Now or after pg 9)

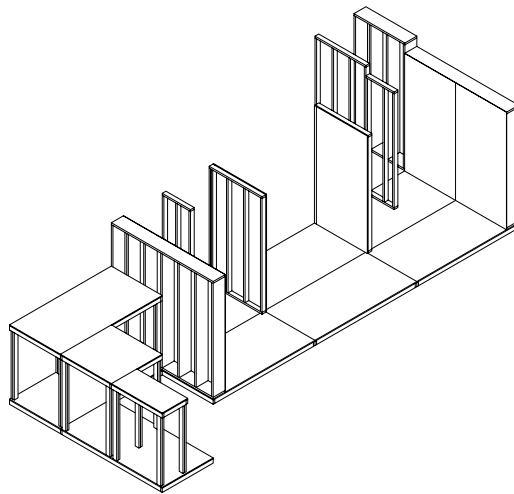
Screw with washers and 1-5/8" screws into the special cut 4x4 and old flats.

Show Name Noises Off 2019		
Reference 3/32"=1'	Drawn By Scott Bedell	Date 09/05/19
CAD File Name Overview	Noises Off 2019 14.vwx 5	

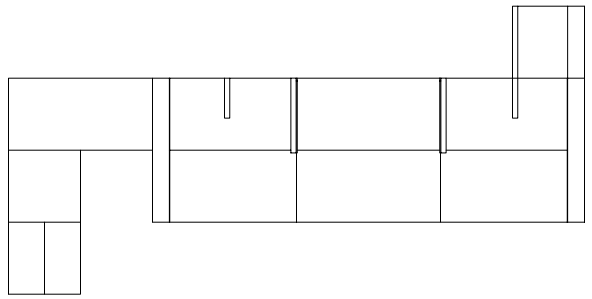
1 Right Iso



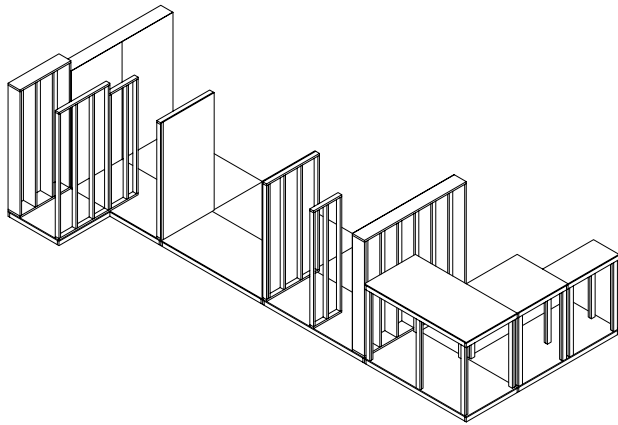
2 Left Iso



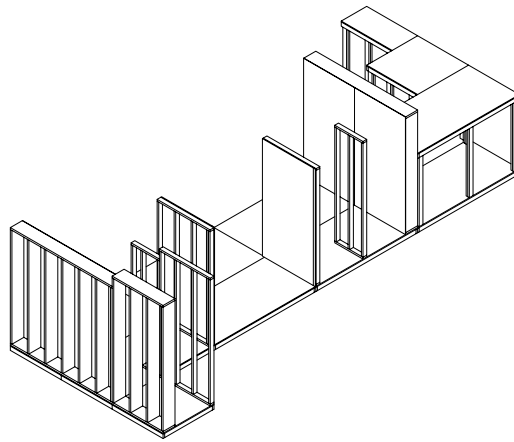
5 Top



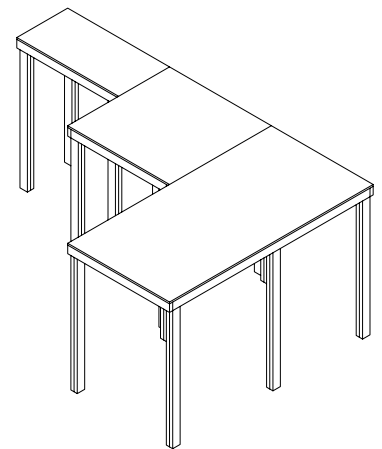
3 Left Rear Iso



4 Right Rear Iso



6 Platform Close Up
Scale: 3/16" = 1'-0"

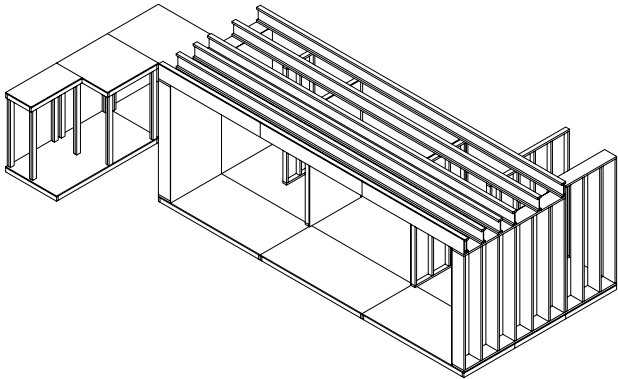


General Notes

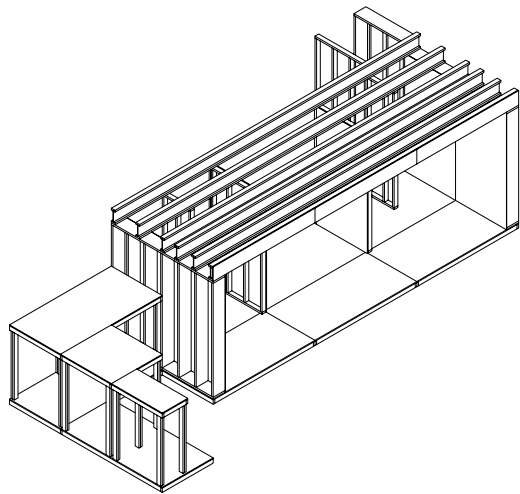
- Cut List:
- 2x4:
 - (14) 4'-11-7/8"
 - (14) 4'-8-3/8"
- Instructions:
- Attach cut list legs to (1) 4x8 Platform, (1) 4x4 Platform, and (1) 2x4 Platform as shown.
 - Flip and bolt together.
 - Toe-nail with 3" screws to 2x4 platform structure.
 - Add internal cross beam 2x4 as needed.

Show Name Noises Off 2019		
Reference 3/32"=1'	Drawn By Scott Bedell	Date 09/05/19
CAD File Name Overview	Noises Off 2019 14.wvx 6	

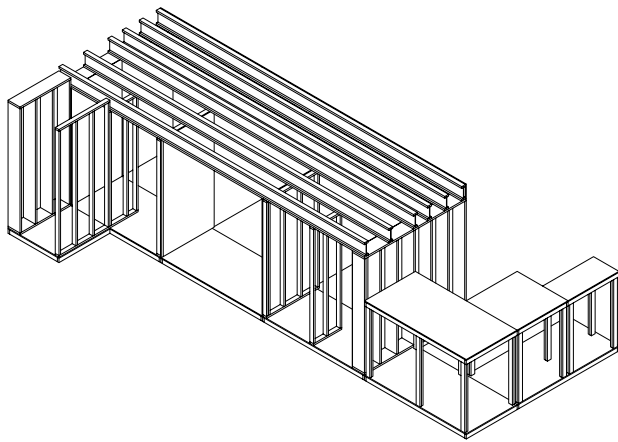
1 Right Iso



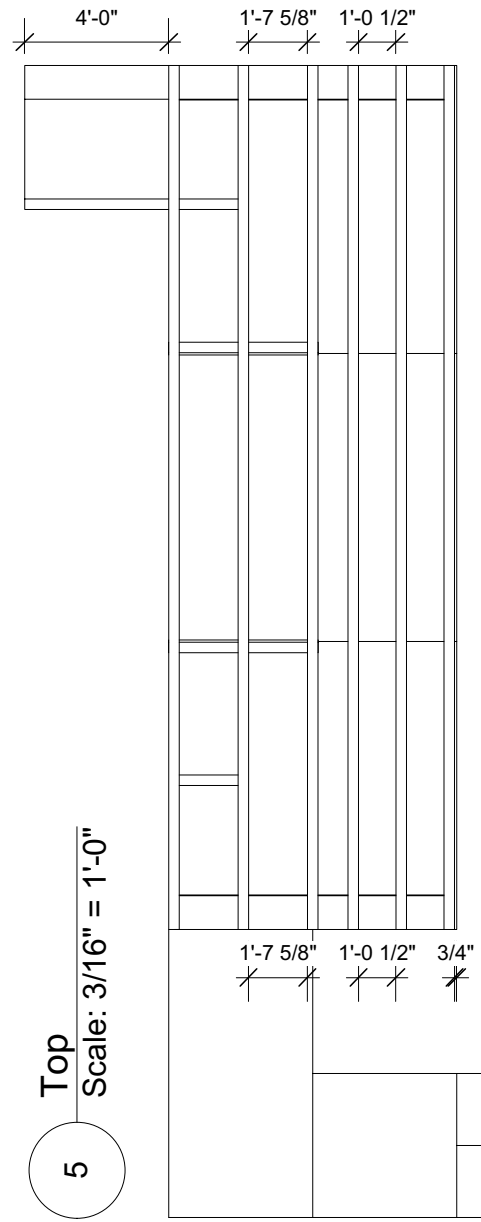
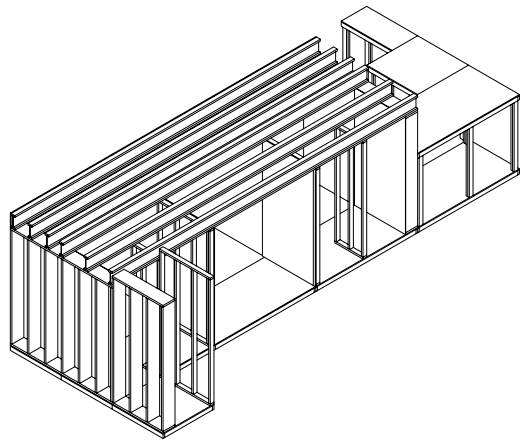
2 Left Iso



3 Left Rear Iso



4 Right Rear Iso



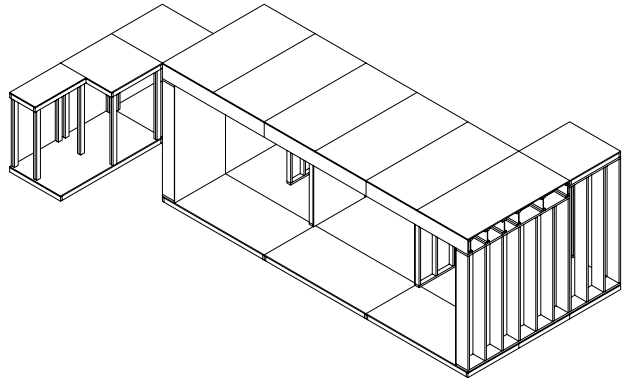
5 Top Scale: 3/16" = 1'-0"

General Notes

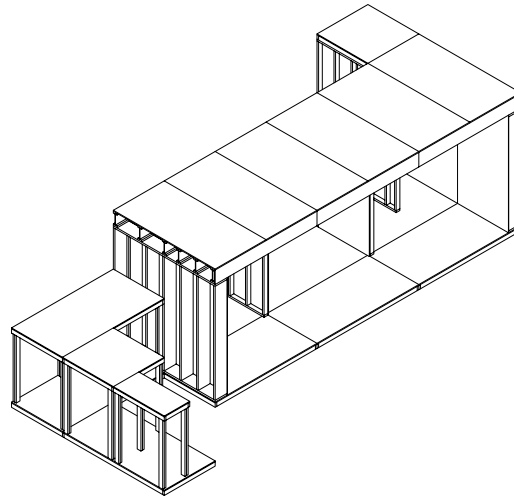
- Cut List. 3/4" Sanded Plywood:
 (3) 11-7/8" x 8'-0"
- Instructions.
 -Attach (3) Plywood Pieces to front of first beam with 1-5/8" screws as shown.
 -Raise BLI80 Beams with Rigging System
 -3" Screw BLI80 Beams from top and bottom into support walls.

Show Name Noises Off 2019		
Reference 3/32"=1'	Drawn By Scott Bedell	Date 09/05/19
CAD File Name Overview	Noises Off 2019 14.vwx 7	

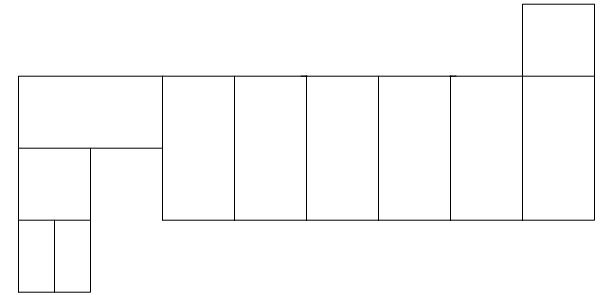
1 Right Iso



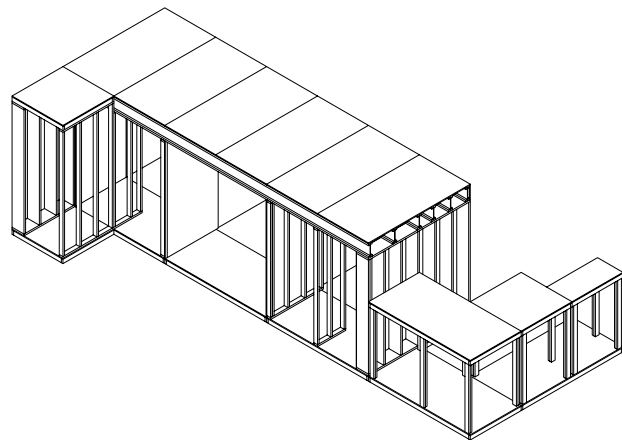
2 Left Iso



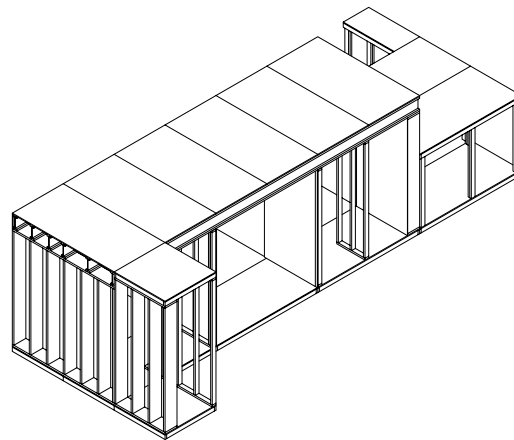
5 Top



3 Left Rear Iso



4 Right Rear Iso

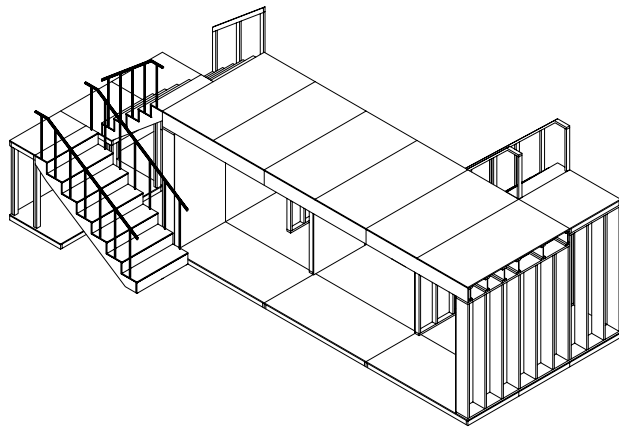


General Notes

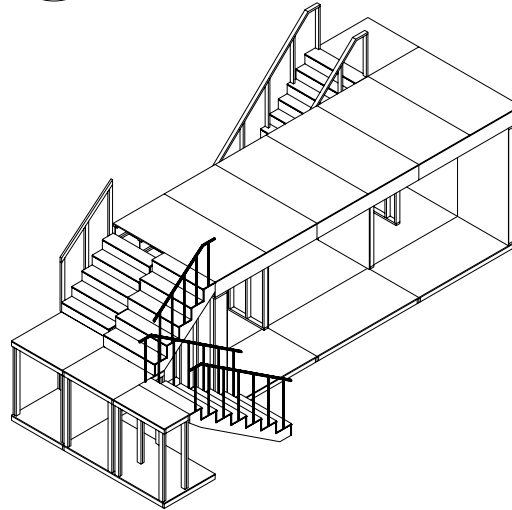
- Cut List. 2x12 Special Cut to Fit Inside BLI80 Beam:
(1) 4'-0"
- Instructions. -Screw down (6) 4x8 Sheets of 3/4" T&G Plywood with 1-5/8" screws.
-Route off any extra T&G on back/front.
-Fill in 4' section of BLI beam with custom cut 2x12 where the platform is going to be attached.
-Attach 4x4 Platform on Support Walls E & F with 4" bolts and mending plates

Show Name Noises Off 2019		
Reference 3/32"=1'	Drawn By Scott Bedell	Date 09/05/19
CAD File Name Overview	Noises Off 2019 14.wvx 8	

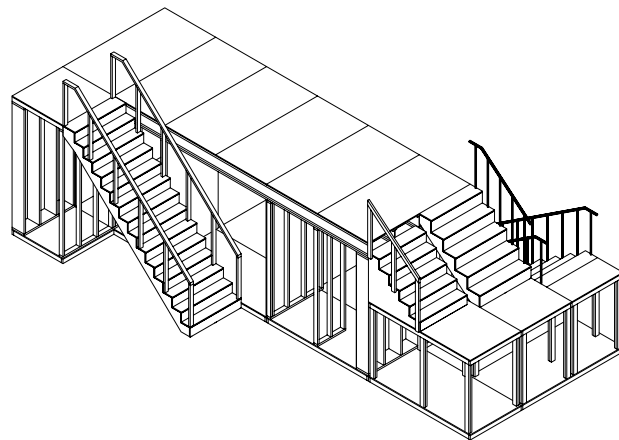
1 Right Iso



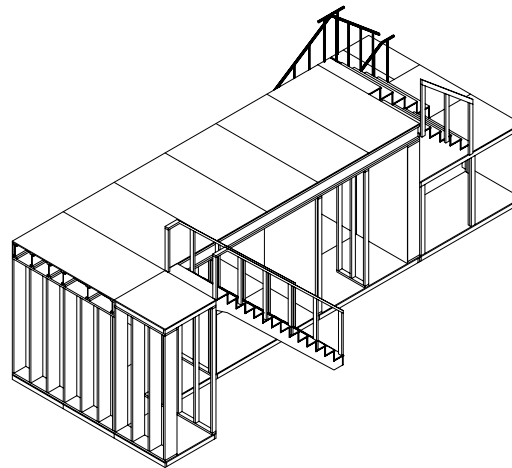
2 Left Iso



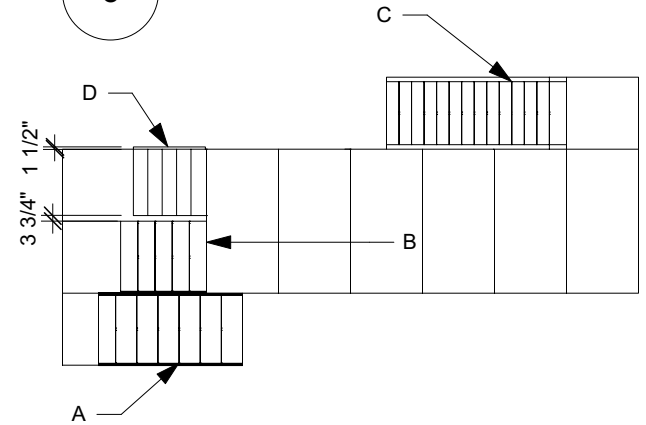
3 Left Rear Iso



4 Right Rear Iso



5 Top



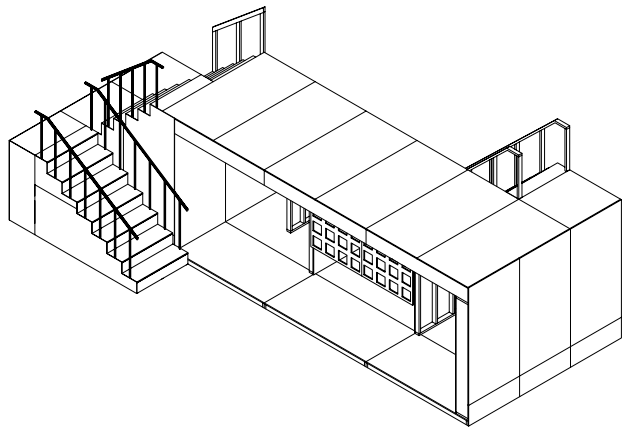
General Notes

- Cut List. 2x4
 (3) Approx 3'-10-1/2" added to staircase D if needed.
 (?) Additional 2x to bring the platforms to level for staircases to bolt attach.
- Instructions.
 -Bolt Staircases A-C
 -Staircase A & C should have additional bolts at any studwalls they cross and the bottom wagons
 -2-1/2" Screw Staircase D into the platform beaneath it through 2x4 supports and bolt to top platform

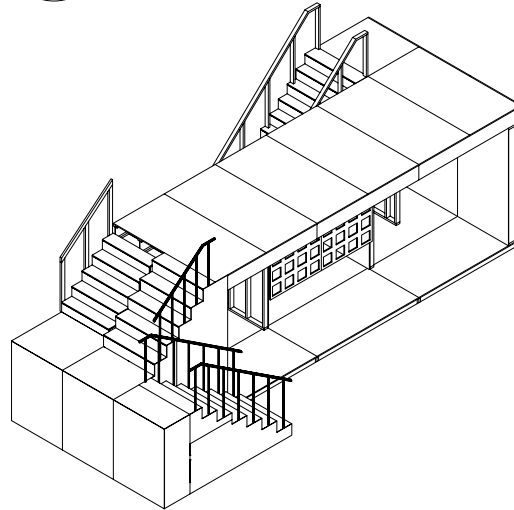
****DO NOT ADD RAILINGS UNTIL DIRECTED*****

Show Name Noises Off 2019		
Reference 3/32"=1'	Drawn By Scott Bedell	Date 09/05/19
CAD File Name Overview	Noises Off 2019 14.vwx 9	

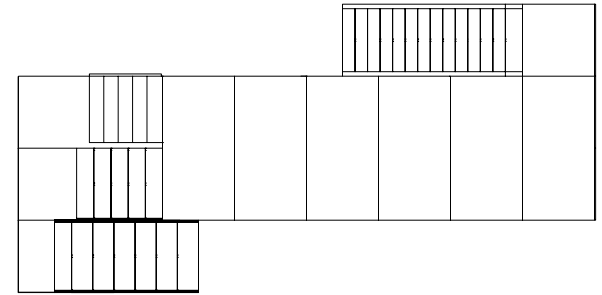
1 Right Iso



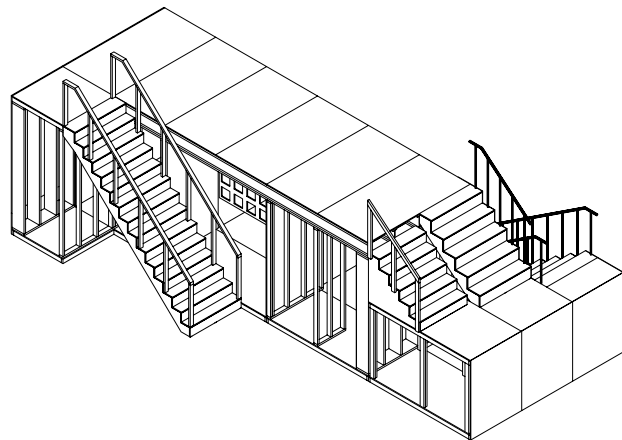
2 Left Iso



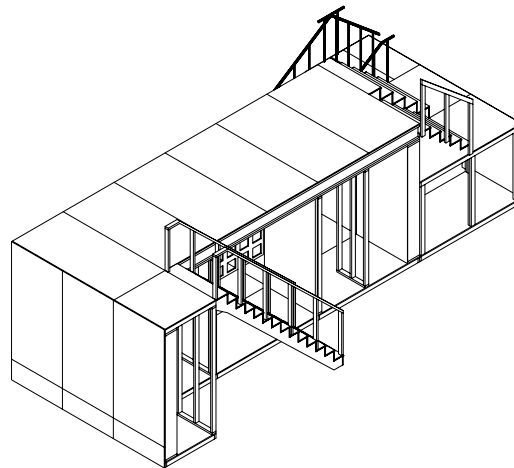
5 Top



3 Left Rear Iso



4 Right Rear Iso



General Notes

Cut List. 3/4" Sanded Ply:
 (3) 4'-0" x 8'-0"
 (3) 1'-4-7/8" x 4'-0"

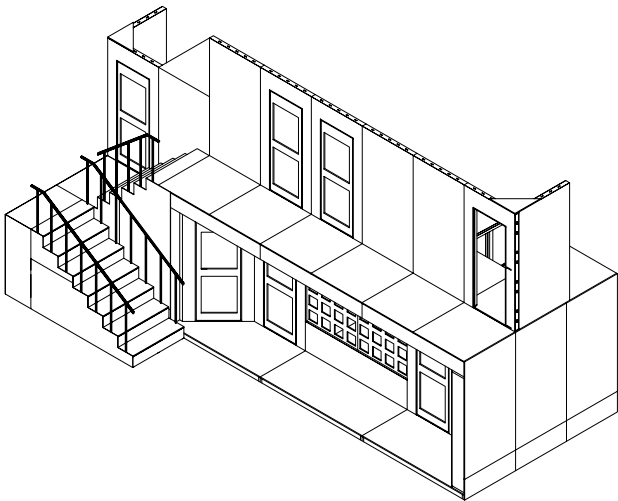
Luan:
 (3) 5'-4-7/8" x 4'-0"
 (1) 5'-4-7/8" x 2'-0"

Luan for Stair Facing:
 (1) 3'-4-7/8" x 8'-0"
 (1) 2'-0" x 3'-3-5/8"
 (1) 2'-0-1/8" x 3'-1-7/8"
 (1) 4'-0" x 8'-0" (Needs routing on both sides)

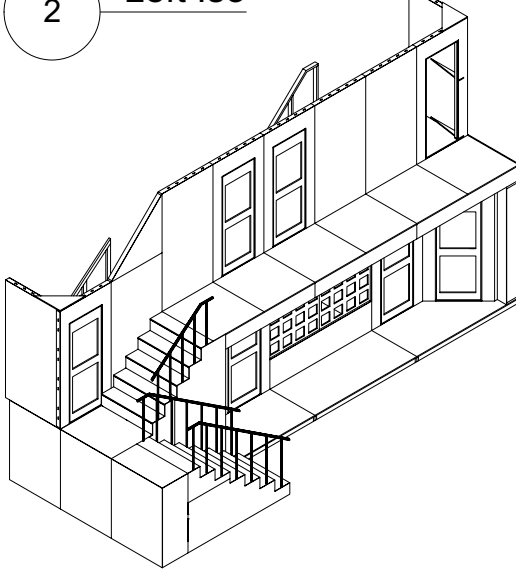
Instructions. -Screw down the 3/4" Sanded Ply with 1-5.8" Screws ever 6" into the far solid wall.
 -Route and screw down the luan facing as needed to staircase level platforms and staircases.

Show Name Noises Off 2019		
Reference 3/32"=1'	Drawn By Scott Bedell	Date 09/05/19
CAD File Name Overview	Noises Off 2019 14.wvx 10	

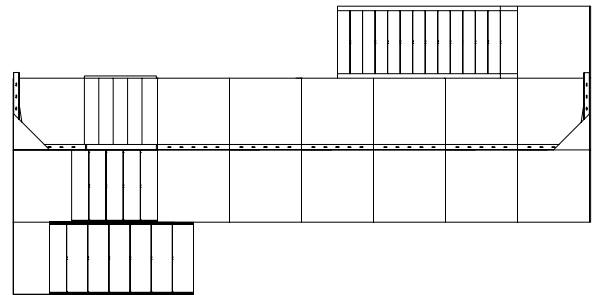
1 Right Iso



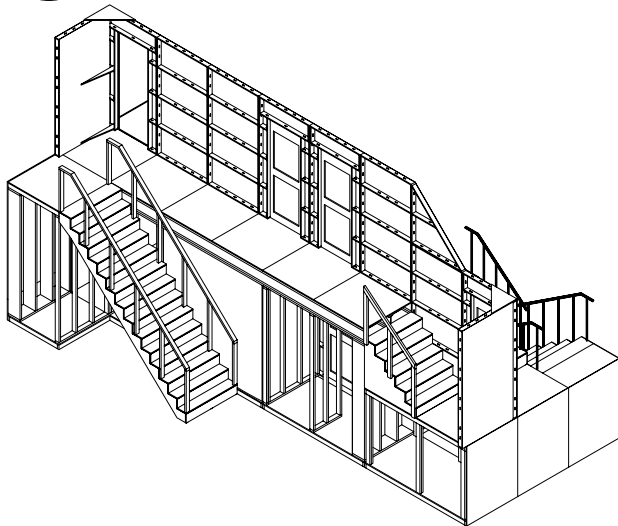
2 Left Iso



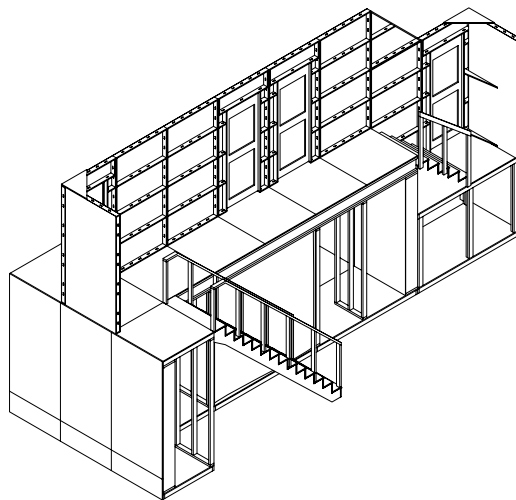
5 Top



3 Left Rear Iso



4 Right Rear Iso

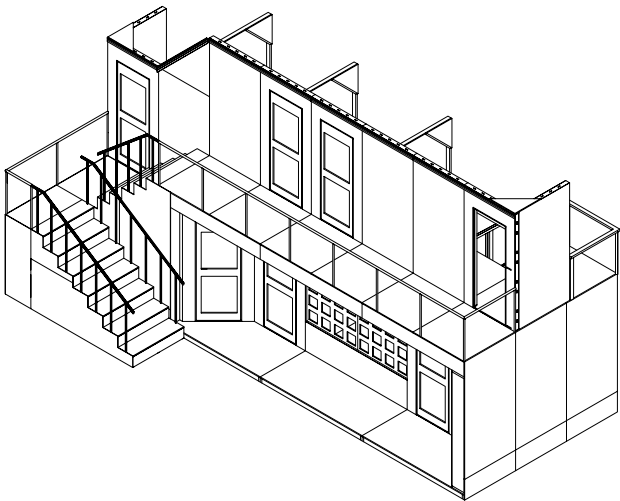


General Notes

- Instructions.
- Add second floor flats bolting together through standard holes and screwing to the wagons with 1-5/8" screws with screw washers.
 - Add extra pieces and extra faces as shown.
 - Note: You can also add the windows and cloth to cover the window back at this point as shown if not already complete.

Show Name Noises Off 2019		
Reference 3/32"=1'	Drawn By Scott Bedell	Date 09/05/19
CAD File Name Overview	Noises Off 2019 14.vwx 11	

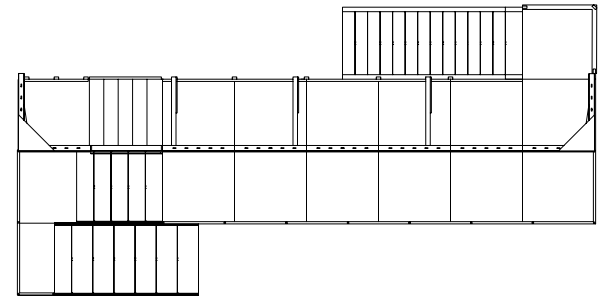
1 Right Iso



2 Left Iso



5 Top



General Notes

Cut List: 2x4 Unless Otherwise Noted

Large Staircase:

(12) 3'-2-7/8"

(2) 16'-0" cut to fit as handrail

4x4 Platform:

(3) 3'-4-1/4"

(2) 4'-0" as handrail

Landing Stairway Platform:

(3) 3'-4-1/4"

(1) 3'-6-1/2"

4x4 Staircase D:

(3) 4'-5/8"

(1) 5'-2-1/2"

Walkway:

(4) 4'-5/8"

(3) 8'-11-1/8" Upright Wall Supports

(1) 4'-0" Handrail

(1) 16'-0" Handrail

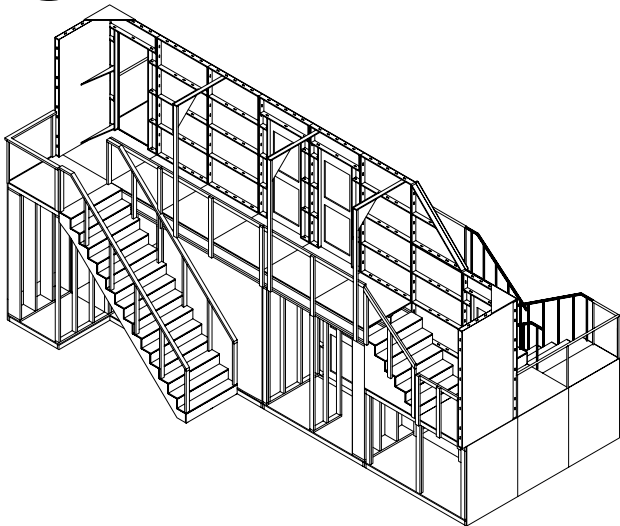
Walkway Cross Support *1x4***:**

(3) 4'-1" 1x4 for Wall Support Cross

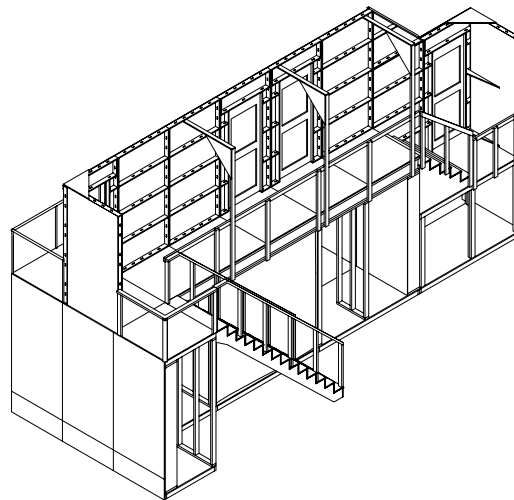
Instructions.-3" Screw Railing together and to platform elements as shown with uprights ever 2'-4'.

-On stairs do NOT screw as shown. Move the uprights to the riser and screw in more places.

3 Left Rear Iso

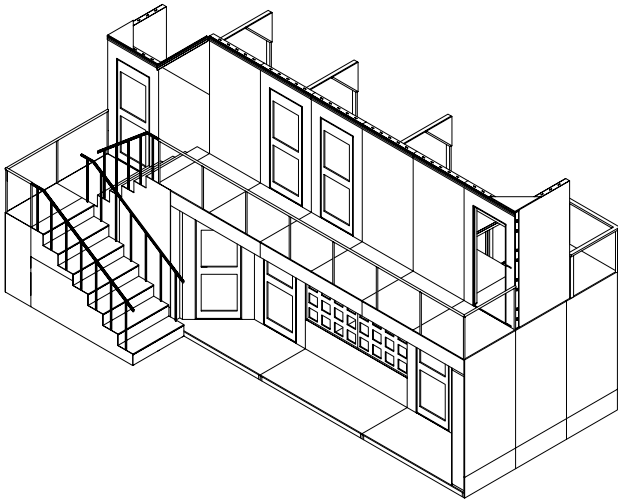


4 Right Rear Iso



Show Name Noises Off 2019		
Reference 3/32"=1'	Drawn By Scott Bedell	Date 09/05/19
CAD File Name Overview	Noises Off 2019 14.vwx 12	

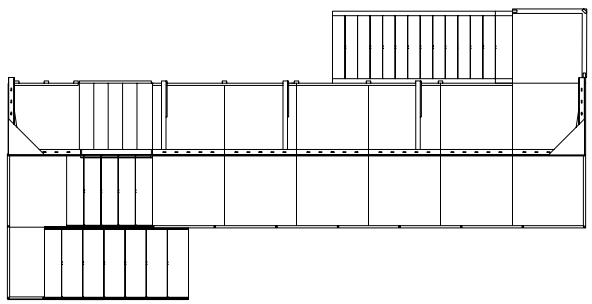
1 Right Iso



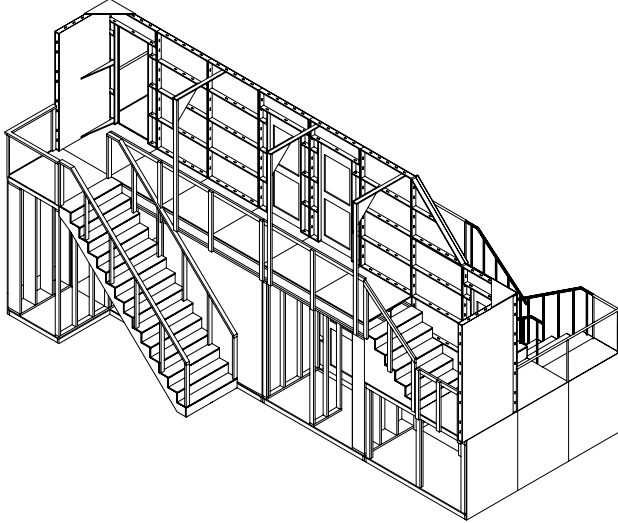
2 Left Iso



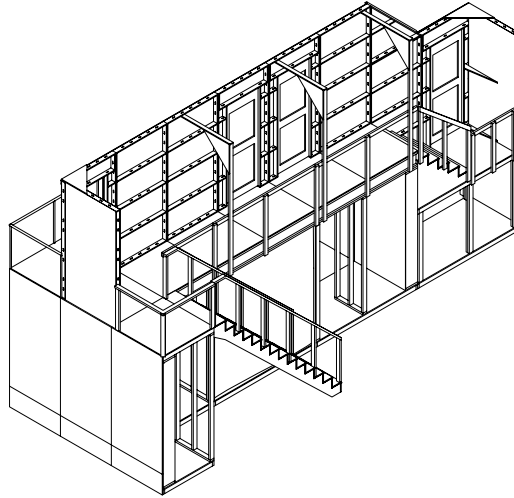
5 Top



3 Left Rear Iso



4 Right Rear Iso



General Notes

- Instructions. Front Railing:
- Cut for 3' Even Height Railing with Banisters 1" or Deeper in Handrail
 - 3" Screw Railing together and to platform elements as shown with uprights ever 2'-4'.
- Crown Molding:
- Staple Crown Molding as shown hitting structural rails.

Show Name Noises Off 2019		
Reference 3/32"=1'	Drawn By Scott Bedell	Date 09/05/19
CAD File Name Overview	Noises Off 2019 14.vwx 13	